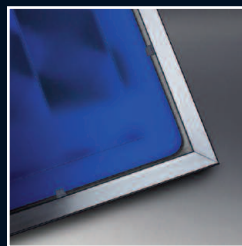


## CDS System Boilers



### Features overview

- 3 year guarantee
- Valves & tails factory fitted
- 2m flying mains lead
- Stainless steel heat exchanger
- Daily pump kick
- Frost thermostat
- Automatic bypass
- Anticycling device
- Single PCB
- Expansion vessel
- Spark generator
- Fully modulating low NOx burner
- No compartment ventilation needed

# CDS System Boilers

We've taken system boiler design to new levels with the CDS models.

Like all system boilers, they combine the energy efficiency benefits of the combi with the big-performance capacity of the conventional boiler. They can work either as a heating-only boiler or with a storage cylinder to provide hot water.

As with our other Next Generation boilers, the CDS measures just 720 x 440 x 300mm, making it one of the smallest system boilers on the market – as well as one of the easiest to install. Case styling is also in the same modern, high gloss design, so the boiler won't look out of place in any domestic environment.

These boilers also boast SEDBUK Band 'A' rating and Energy Saving Trust recommendation.

CDS boilers are available in three fully-modulating central heating outputs of 12, 20 and 30kW and share the same compatibility with the innovative PremierPack wall-mounting jig, with its premium installation features and boiler guarantee extension.



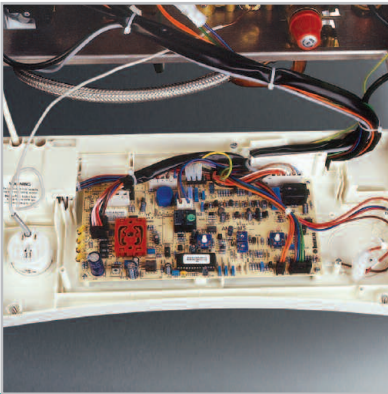
### Compact dimensions

At 720 x 440 x 300mm the CDS range is ideal for any installation application.



### Daily pump kick

Protects the pump even when the boiler is not in use.



### Single PCB

To simplify the electrics, a single PCB controls the boiler and is enclosed in a waterproof casing.



### Expansion vessel

This 8 litre, powder coated vessel used throughout the Next Generation range is easily accessible from the front rather than the rear.



### Spark generator

A stand-alone component, separate to the PCB, allowing for easy changeover if required.



Model	CH Output (kW)	Output (Btu/h)	Flow Rate (l/min)	Dimensions (mm)	Weight (kg)
CD12S	12.8	43,650	N/A	720x440x300	37
CD20S	19.5	66,500	N/A	720x440x300	38
CD28S	30.1	102,700	N/A	720x440x300	40

Compatible with GasSaver