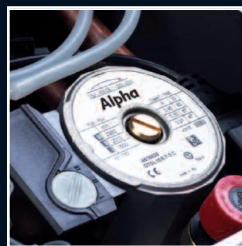


## CDR Regular Boilers



### Features overview

- 1 year guarantee
- 2m flying mains lead
- Stainless steel heat exchanger
- Daily pump kick
- Frost thermostat
- Pump overrun feature
- Anticycling device
- Simple clock wiring
- Fully modulating low NOx burner
- No compartment ventilation needed
- Splashproof electrics

# CDR Regular Boilers

The Alpha CDR heating-only boilers are for use on open-vented or sealed systems (using the Alpha sealed system kit). With these high efficiency boilers, there's a plentiful supply of hot water when fitted with a storage cylinder.

With a power output ranging from 13kW to 24kW, they provide the flexible answer for the majority of traditional installation scenarios.

## Compact and light

At just 600 x 390 x 305mm in size, the CDR range makes for exceptionally flexible siting. The CD18R, for example, weighs just 27kg, a simple one-man lift.

## Efficient and reliable

The CD13R, CD18R and CD24R have a SEDBUK Band 'A' efficiency rating with supreme Alpha reliability. The CDR can operate on an open-vented system, which makes them ideal as replacements for traditional cast iron boilers.



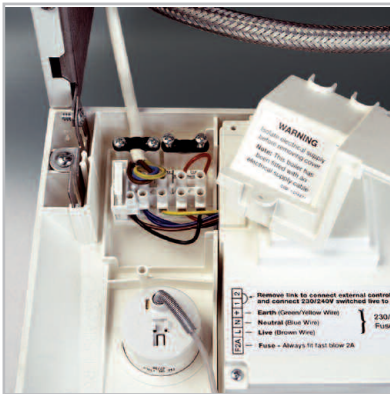
### Compact dimensions

600 x 390 x 305mm. Fits in the tightest of spaces and requires only a one-man lift.



### Safe electrics

Electrics sealed in their own isolated, splashproof compartment.



### Simple clock wiring

A room thermostat can be connected to the easy access terminal.



### 2m flying mains lead

A 2m flying lead is supplied, already connected to the boiler and simply requiring a plug to be fitted.



### Pump overrun

Built-in pump overrun of 60 seconds on heating to cool the boiler and prevent overheating.



Model	CH Output (kW)	Output (Btu/h)	Flow Rate (l/min)	Dimensions (mm)	Weight (kg)
CD13R	13.1	44,700	N/A	600x390x305	27
CD18R	19.6	66,800	N/A	600x390x305	27
CD24R	25.6	87,300	N/A	600x390x305	28

Compatible with GasSaver