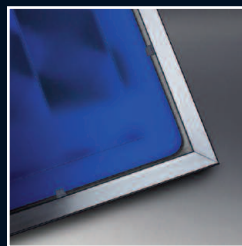


## CDC Combination Boilers



### Features overview

- 3 year guarantee
- Seasonality Valve
- Designed-in filling loop
- Alpha Hydroblock
- Valves & tails factory fitted
- 2m flying mains lead
- Stainless steel heat exchanger
- Daily pump kick
- Frost thermostat
- Automatic bypass
- 6 year guarantee on DHW heat exchanger
- Anticycling device
- Fully modulating low NOx burner

# CDC Combination Boilers

Packed with advanced features, CDC boilers are the 'flagship' combis in our Next Generation range. They are available in fully-modulating central heating outputs of 25, 28 and 35kW, all of which are SEDBUK Band 'A' rated.

To maximise performance, they have a built-in Seasonality Valve, which automatically adjusts the DHW flow based on the temperature of the incoming main. This allows more flow in spring, summer and autumn.

Also standard is the Alpha Hydroblock, which uses less pipework connections to save space and make access for servicing far easier.

CDC models share the same sleek exterior looks and dimensions as the other boilers in our Next Generation range. With a re-designed case featuring stylish curved edges, a high gloss finish and measurements of just 720 x 440 x 300mm, they are ideal for fitting alongside standard kitchen cupboards.

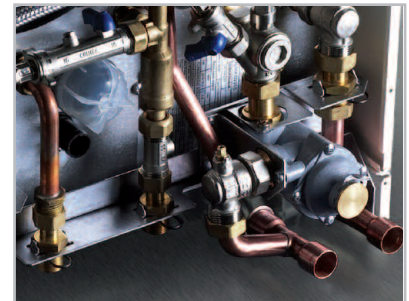
The control panel for the CDC boiler is located under a neat hinged flap and, like all boilers in the Next Generation range, is straightforward to use and extremely functional. There are temperature controls for heating and hot water; a pressure gauge and easy-to-understand LED fault indicators.

As with all Next Generation boilers, you'll find the CDC models are designed with ease of service and maintenance in mind. Fascia panels are simple to remove, with all major components being accessible from the front. Likewise, drop-down control panels enable easy access to the PCB, so that plug-in controls can be fitted by simply removing the cover panel and using the spade connectors.



**Seasonality Valve**

The Seasonality Valve automatically adjusts the DHW flow by up to 35% based on the temperature of the incoming main.



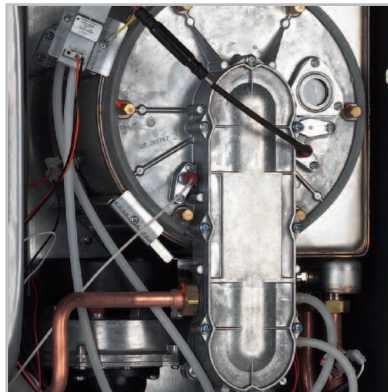
**Designed-in valves and copper tails**

Valves and tails are pre-assembled and factory fitted to allow simpler and faster installation times.



**Alpha Hydroblock**

The Hydroblock incorporates the diverter valve, has no DHW diaphragm and uses less pipework connections – all of which allows for a more compact boiler design.



**Primary heat exchanger**

High grade stainless steel heat exchanger and a fully modulating low NOx burner ensures full SEDBUK Band 'A' rating.



**Designed-in filling loop**

The filling loop is built in and sits neatly in the base of the boiler making the installation clean and stylish.



| Model | DHW Output (kW) | CH Output (kW) | Output (Btu/h) | Flow Rate (l/min) | Dimensions (mm) | Weight (kg) |
|-------|-----------------|----------------|----------------|-------------------|-----------------|-------------|
| CD25C | 24.3            | 19.5           | 84,800         | 9.6               | 720x440x300     | 41          |
| CD28C | 28.7            | 25.9           | 97,900         | 11.4              | 720x440x300     | 42          |
| CD35C | 34.6            | 30.3           | 118,100        | 14.2              | 720x440x300     | 43          |

Compatible with SolarSmart and GasSaver